

**Burton – VA Beach (Line 27)
115 kV Electric Transmission Line
Rebuild Project Update**

**Shore Drive Civic League Meeting
November 18, 2025**



**Dominion
Energy®**

Project Team

Subject matter experts are here for you



Brandon Thomas
Communications



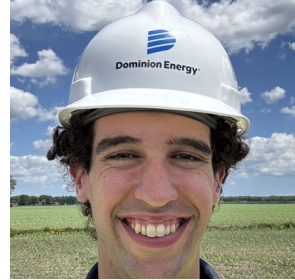
Rick McLean
Project Manager



Charles Schleicher
Construction



Jacob Carasella
External Affairs

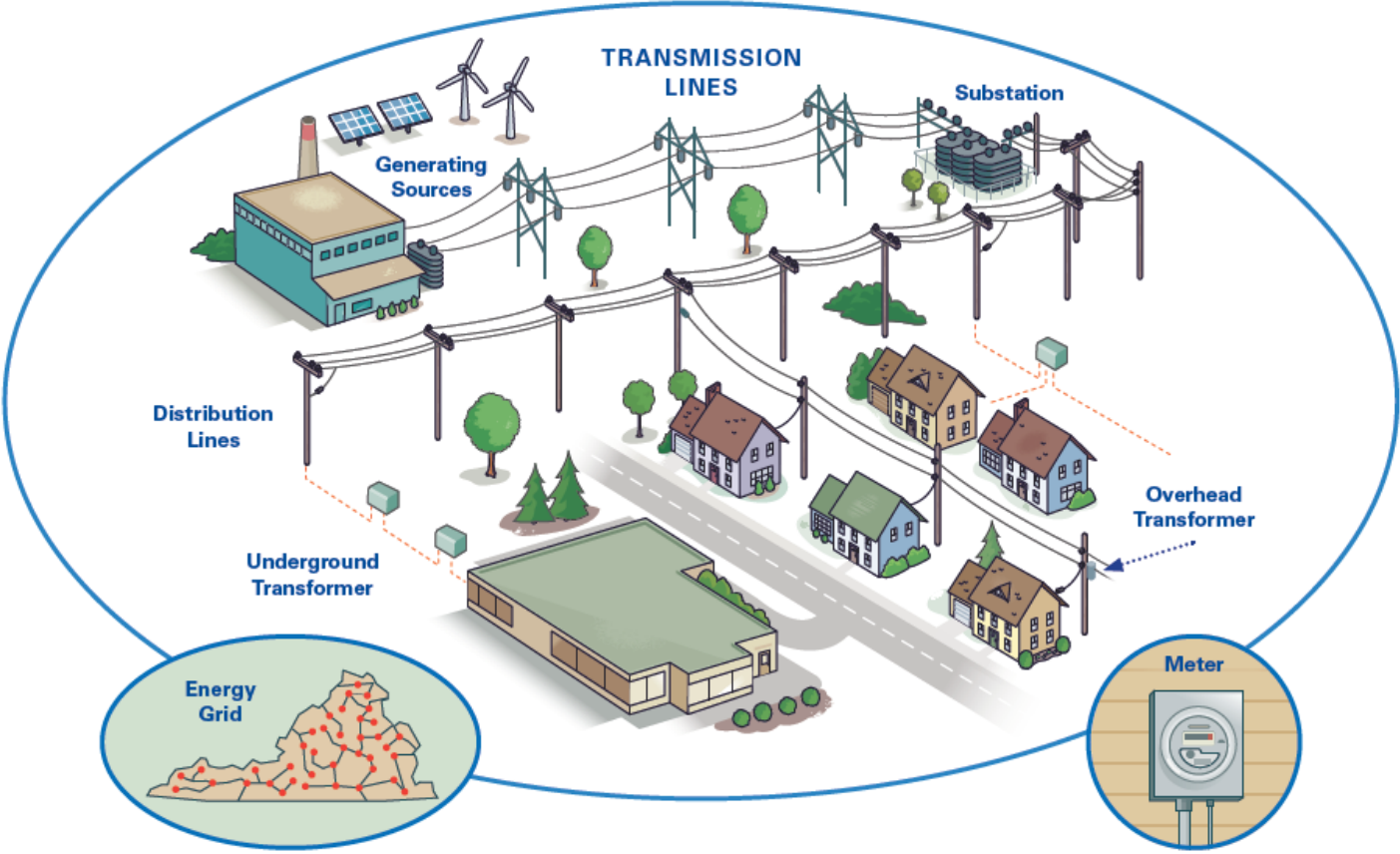


Devin Headrick
Access



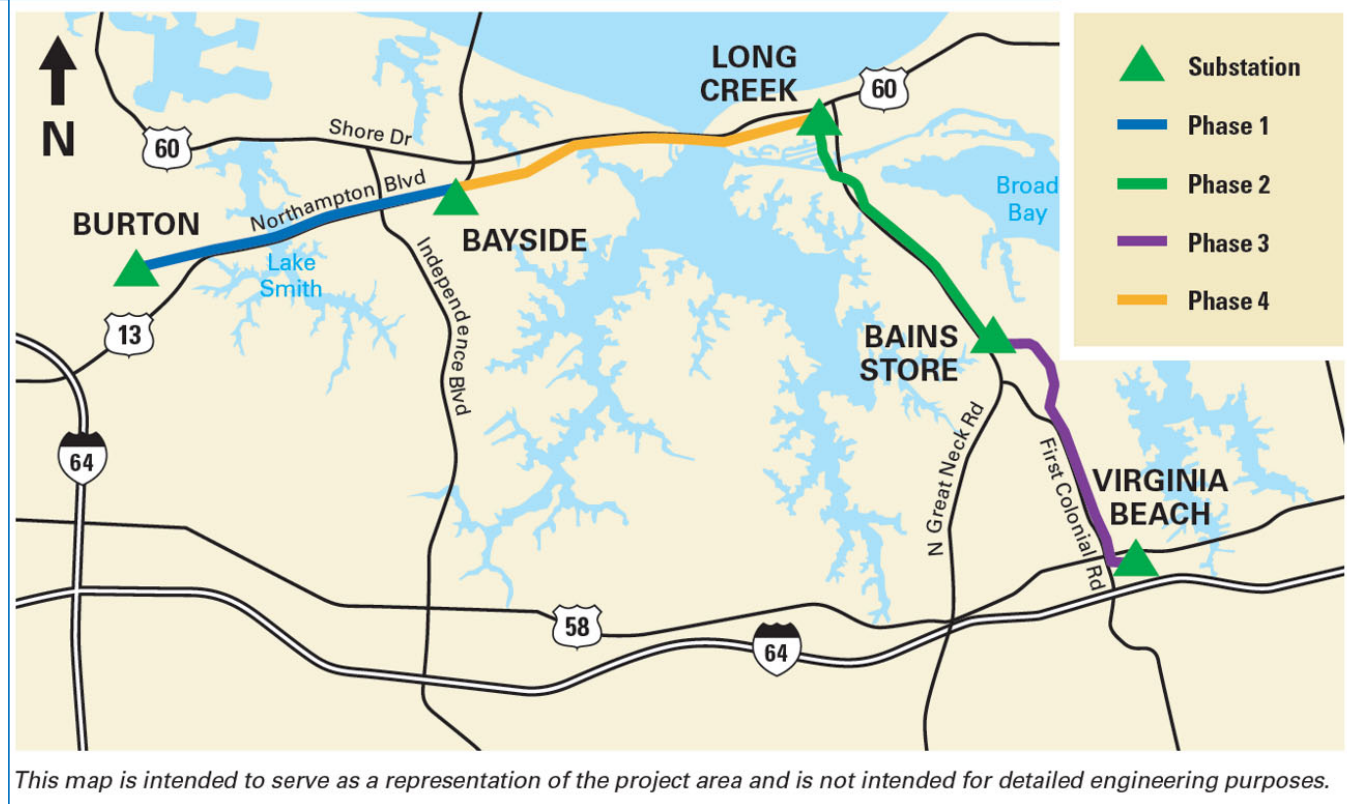
Cherise Newsome
Media Relations

Electric Grid Overview



Project Overview

- **Need:** This project is necessary to replace aging equipment and maintain reliable service for our customers.
- **Where:** Line 27 is a 115 kilovolt (kV) electric transmission line in north Virginia Beach running from the Burton Substation to the Bayside Substation, then Long Creek Substation, then Bains Store Substation, and ending at the Virginia Beach Substation.



Additional Project Context

- After **nearly five decades** of dependable service, the existing structures and components of Line 27 are at the end of life and need to be replaced.
- Pole inspections revealed **degradation of wooden structures from decay and woodpecker damage**. Salt contamination also requires replacement of transmission equipment.
- **187 wooden structures** will be replaced with **steel structures**. Some existing concrete and steel poles will remain, but most will be replaced.



Construction Schedule

*Pending weather and progress

PHASE 1: Burton – Bayside (Complete)

- Rehabilitation ongoing

PHASE 2: Long Creek – Bains Store

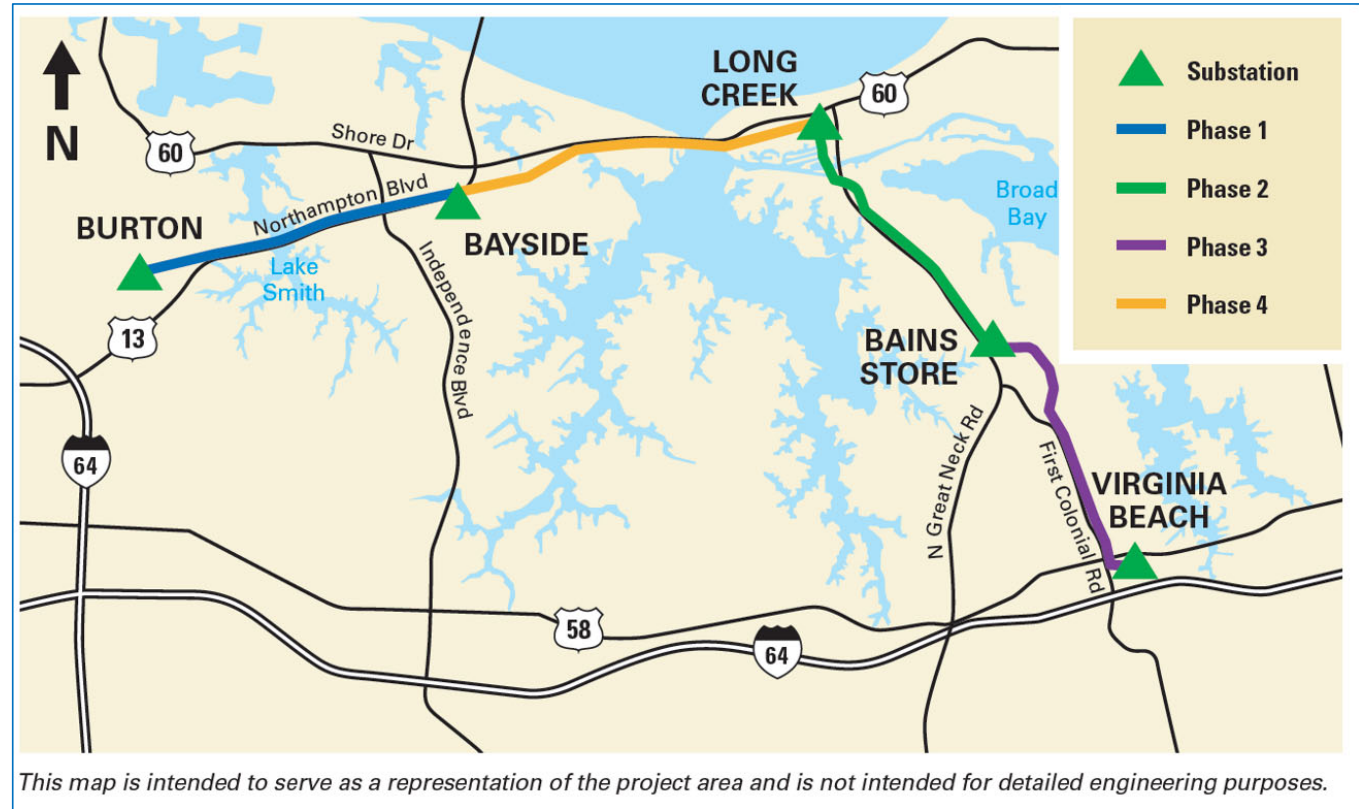
- October 2025 – April 2026

PHASE 3: Bains Store – Virginia Beach

- April 2026 – September 2026

PHASE 4: Bayside – Long Creek

- September 2026 – December 2027



Rehabilitation

- This process generally takes about 6 months.
- Includes fence repairs, tree/bush replacement, and grass reseeding.
- Replacement trees are not likely to be the same height as trees removed.



Construction Schedule

*Pending weather and progress

PHASE 1: Burton – Bayside (Complete)

- Rehabilitation ongoing

PHASE 2: Long Creek – Bains Store

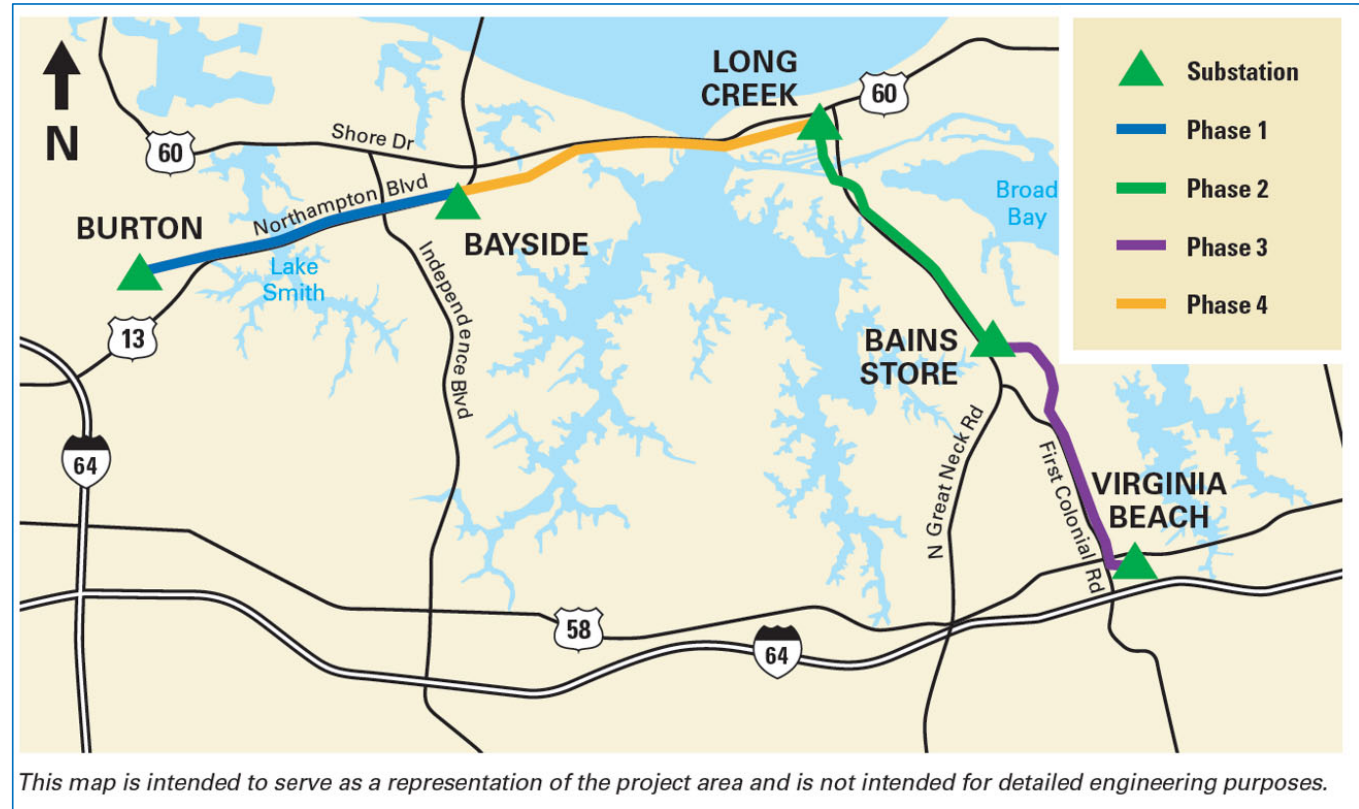
- October 2025 – April 2026

PHASE 3: Bains Store – Virginia Beach

- April 2026 – September 2026

PHASE 4: Bayside – Long Creek

- September 2026 – December 2027



Environmental Concerns – Osprey Nest

- **Current Situation:**
 - Existing transmission structures include deterrents to prevent nesting on top of lines.
 - Nesting on electric structures poses **safety and reliability risks** for both birds and the grid.
- **Upcoming Actions:**
 - A **biology survey** is scheduled in the area.
 - Awaiting environmental recommendations.
- **Why It Matters:**
 - Bird nest away from transmission lines is **safer for birds** and helps maintain **system reliability**.
 - Goal: Encourage nesting in appropriate locations rather than on energized structures.


Dominion Energy Rate Increase

Quick Facts


Dominion Energy filed for a new base rate with the State Corporation Commission (SCC) on March 31.



Why: A rate increase would support reliable service, clean energy transition, and customer growth.



If approved by the SCC, this will be the first base rate increase since 1992; residential rates have risen



Residential rates has risen ~40% less than inflation over the past decade.

Biennial Rate Case

Continued

Who approves or disapproves rate cases?

The **State Corporation Commission (SCC)** makes the final decision on whether to approve or deny rate cases. In some cases, the SCC may approve the request but adjust the amount to what it considers reasonable.

When does the rate increase go into effect?

If approved, the rate increase will be phased in gradually from through **2027**. You would likely see an increase of **\$22 by 2027**.

Why a rate increase?

The increase is intended to cover investments in power generation and delivery needed to maintain reliability. The request take into consideration rising Inflation and the increased cost of labor, materials and equipment.

When was the last rate increase?

If approved this would be the first **base rate increase since 1992**.

Q&A



**Questions?
Let's Discuss!**

Thank you for your time!

Connect with us if you have questions or feedback:

Brandon Thomas: 804-385-5154

brandon.thomas@dominionenergy.com

Biennial Rate and Fuel Case

Why the Change?

- Dominion filed new base rates (biennial) and updated fuel rates (annual) on **March 31**.
- Needed to support **reliable service, clean energy transition**, and **customer growth**.
- First **base rate increase since 1992**; residential rates have risen **~40% less than inflation** over the past decade.

Base Rate Proposal (Effective Jan 1, 2026)

- **2026**: +\$8.51/month
- **2027**: +\$2.00/month
- Driven by:
 - Inflation (labor, materials, equipment)
 - Grid upgrades for growing demand
- **New rate class** for high energy users (e.g., data centers)
 - Includes **14-year contract** to prevent cost shifting to other customers

Fuel Rate Proposal (Effective July 1, 2025)

- **+\$10.92/month** for typical residential customer
 - Includes **\$3.99 fuel credit expiration**
- Shift **power capacity costs** from base to fuel rate for **stability**
 - Costs set by **PJM**, reflecting regional demand
- Dominion **does not profit** from fuel or capacity charges